

 **AGEPAN**[®]

NEW!

**STRONGEST
PERFORMANCE**

in their
weight class



AGEPAN[®]
THD cover H

The strong one among the light ones.

A brand of
SONAE 
ARAUCO

THE STRONG ONE AMONG THE LIGHT ONES.

AGEPAN® THD cover H is a pressure-resistant wood fibre insulation board in accordance with EN 13171 and can be used in a variety of ways in roof, ceiling, and wall constructions – in both new buildings and renovations.

It combines the highest ecological standards with excellent heat protection and ensures a balanced indoor climate thanks to its hygroscopic wood fibres. Temperature fluctuations are noticeably reduced, increasing living comfort. The high heat storage capacity reduces the need for heating and cooling energy. As a UDP-A-certified underlay board, it also offers an emergency roof function for up to eight weeks. The abrasion-resistant surface ensures durability, while good workability and clean cut edges enable precise, economical processing.

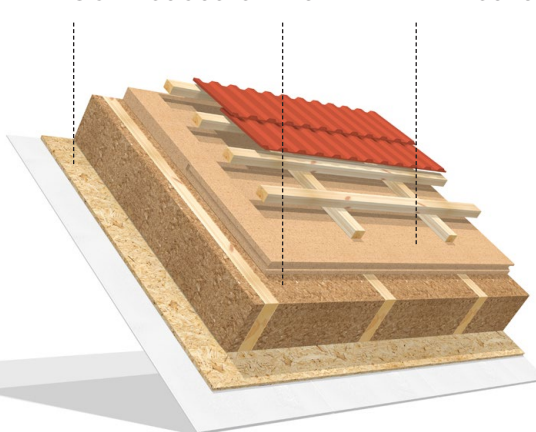
250 kg/m² unique surface layer strength

The robust yet lightweight board with unparalleled surface layer strength (up to 250 kg/m²) is dimensionally stable and resistant to pressure and impact. Ideal for transport and installation – reduces waste and ensures safety on the construction site.

AGEPAN®
OSB Ecoboard

AGEPAN®
Flex

AGEPAN®
THD cover H

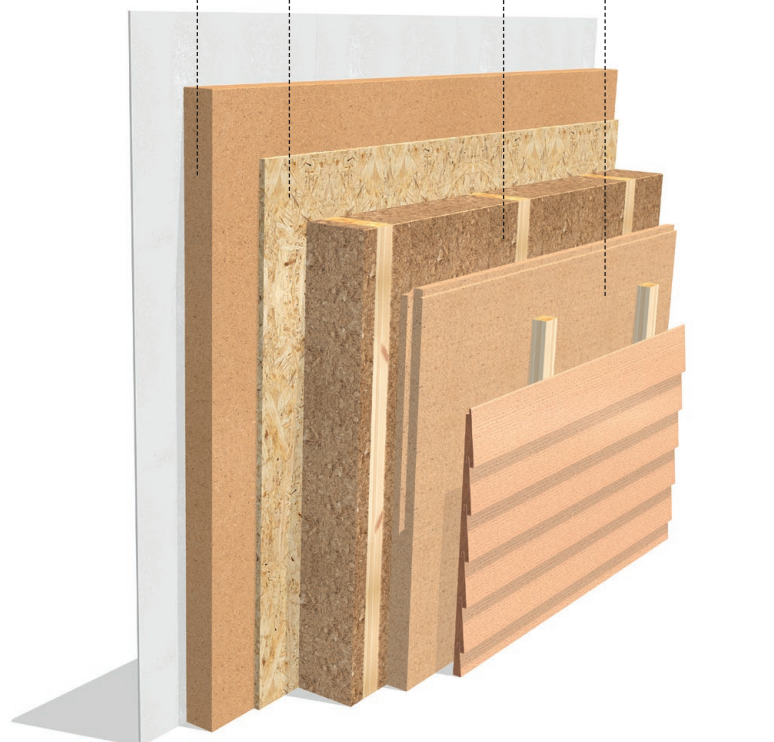


AGEPAN®
THD install

AGEPAN®
Flex

AGEPAN®
OSB Ecoboard

AGEPAN®
THD cover H



+ EMERGENCY ROOF FUNCTION



Flexibility in the construction process thanks to temporary roof function for up to 8 weeks.

+ EVERYTHING FROM A SINGLE SOURCE

Compatible, perfectly coordinated system products for maximum safety and smooth processes.

+ EXCELLENT CUTTING PROPERTIES

Fast and precise installation.

+ VERY HIGH STRENGTH IN THE TOP LAYERS

Dimensionally stable and resistant to pressure and impact.



+ UNDERLAYMENT BOARD UDP-A

Second water-repellent layer, vapor-permeable, windproof, and rainproof.

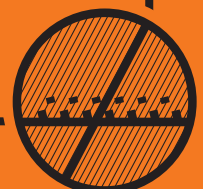


+ QUALITY PRODUCT




High standards, sustainably produced in Germany – and therefore a low carbon footprint.

+ ABRASION-RESISTANT SURFACE

Less dust and cleaning effort, better adhesion of adhesive tapes – saves primer and time.



Application areas Field of application according to DIN 4108-10-2021-11

Roof / Ceiling		Wall			
	External insulation of roof or ceiling, protected from weathering, insulation beneath waterproofing layers	DAA-ds		External wall insulation behind cladding	WAB-ds
	External insulation of roof or ceiling, protected from weathering, insulation beneath roof coverings	DAD-ds		Insulation of timber frame, timber board construction, and similar cavities	WH

Delivery information

Thickness (mm)	Edge	Format (mm)	Cover dimension (mm)	Cover dimension board (m ²)	Pieces/package	Packages/pallet	Weight/pallet (kg)
60	T+G	1890 x 600	1875 x 585	1,10	17	2	430
80	T+G	1890 x 600	1875 x 585	1,10	13	2	440

Technical Data

Property	Unit	Value
Standard		EN 13171
Raw density ρ	kg/m ³	~ 180
Nominal thermal conductivity λ_D	W/mK	0,043
Rated thermal conductivity λ_B	W/mK	0,045
Water vapour diffusion resistance factor μ		3
Compressive stress/strength	kPa	≥ 150
Tensile strength perpendicular to the plane of the board	kPa	≥ 10
Short-term water absorption	kg/m ²	≤ 1
Specific thermal capacity	J/kgK	2100
Maximum application temperature	°C	110
Formaldehyde emission class		NAF (<0,03 ppm)*
Fire behavior Euroclass according to DIN EN 13501-1		E
Outdoor exposure		up to 8 weeks
Board marking		WF-EN 13171-T4-WS1,0-CS(10/Y)150-TR10-MU3
Disposal		Waste wood category A2; waste code numbers (AVV): 030105, 170201

* Meets the requirements according to the German Chemicals Prohibition Ordinance (E05)

Building physics parameters

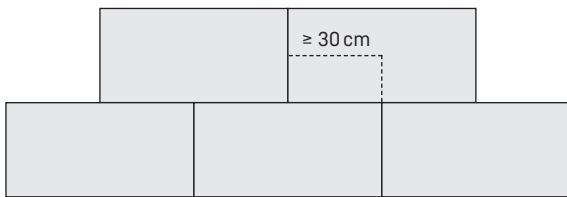
Property	Unit	Board thickness (mm)	
		60	80
Nominal value thermal resistance R_D	m ² K/W	1,35	1,85
Thermal resistance R	m ² K/W	1,30	1,70
Water vapour diffusion equivalent air layer thickness s_d	m	0,18	0,24

General information

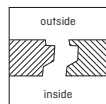
- + Only use undamaged boards
- + Move individual boards upright
- + When used as a underlay board the exposure to weather is limited to 8 weeks
- + If moisture is absorbed, ensure that the boards are dried back to their normal moisture content
- + If subsequent work is delayed, it may be advisable to cover the boards with suitable weather protection for a period of time
- + Re-cut seams joints, connections, and penetrations must be windproof and rainproof sealed with suitable adhesive tapes, e. g., pro clima® Tescon Vana, Ampack Ampacoll XT, and SIGA Wigluv®, each with primer. Follow the manufacturer's instructions

Use on walls with rear-ventilated façades

- + Boards can be laid directly on the supporting structure
- + The following grid dimensions must be observed:
 - 62.5 cm
 - 83.5 cm
- + Lay the boards in a tight-fitting, joint-tight pattern
- + The joint offset must be at least 30 cm



- + Distinguish between inside and outside (stamping on the outside)
- + The tongue points toward the ridge or upward
- + The boards must be fixed during installation and then secured with the counter batten



AGEPAN® THD cover H, 60 mm

Example of maximum distance between fasteners under given conditions.

- Rib spacing: 62.5 cm
- Counter batten: 40 x 60 mm
- Fasteners: Paslode grooved nails 4.2 x 160, head diameter 8.6 mm

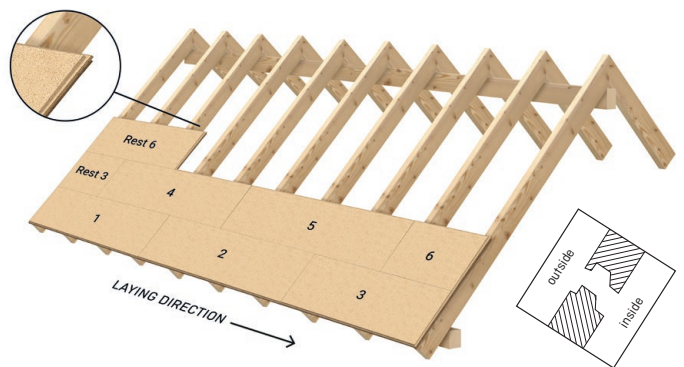
Rated load façade (kN/m ²)	Rated wind suction (kN/m ²)	
	WZ 1	WZ 2
	-1.13	-1.39
0.75	40 cm	40 cm

Wind load according to Table 15, DDH regulations, based on DIN EN 1991-1-4; ridge height max. 10 m

- + AGEPAN® THD cover H in 80 mm must be fastened with screws according to structural verification

Use as above-rafter insulation

- + The maximum grid dimension of the rafters is:
 - Board thickness 60 mm > max. grid 100 cm
 - Board thickness 80 mm > max. grid 110 cm
- + Distinguish between inside and outside (stamping on the outside)
- + Tongue points upward toward the ridge
- + Laying at right angles to the rafters, starting at the lower edge (corner area)
- + Laying of the second row begins with the remaining piece from the first row
- + Fasten the board to at least two rafters
- + Offset of at least 1 bay width



- + Fix the boards in place after laying and then secure them with counter battens
- + The fastening of the counter batten are depending on the loads and should be carried out according to structural verification
- + AGEPAN® THD cover H is not a load-bearing component (e.g., snow loads)
- + Surface water runoff can cause discoloration of sheet metal cladding, so use suitable protective films and only remove them after the roof has been completely covered

Design aids for counter batten fastening for above-rafter insulation and façades can be found at www.sonaearauco.com

Rainproof underlay (UDP-A) in accordance with ZVDH

- + Rainproof additional measures in accordance with ZVDH "Merkblatt für Unterdächer, Unterdeckungen und Unterspannungen" of class 3 for roof pitches ≥ 15°; UDP-A
- + Additional taping of the tongue and groove joint is not necessary
- + Nail sealing tapes are not necessary



SUSTAINABILITY IS A CORE PRIORITY FOR US.

Protecting the environment is part of our corporate culture. At Sonae Arauco, we are committed to the sustainable use of raw materials and actively uphold these principles throughout the entire production process. AGEPAN® products can contribute to meeting the challenges of climate change.



AGEPAN® shapes the future of building with sustainable wood fiber solutions that connect people and nature. We aim for every construction project to preserve the climate, and enhance quality of life – today and for future generations.

			E05	FF		MADE IN GERMANY ☆☆☆
Heat and cold protection	CO ₂ storage	Healthy living	Meets the requirements according to the German Chemicals Prohibition Ordinance	Formaldehyde-free glued	Weather resistant	Produced in Germany



Use products that are certified accordingly: PEFC certified products can be delivered on demand and within availabilities. Please specify when ordering.



Product Flyer, February 2026

Product and company names in this product flyer are trade names or registered trademarks. Reproduction is permitted only with the express approval of Sonae Arauco. Sonae Arauco assumes no liability for errors or inaccuracies. This product flyer reflects the technical status at the time of printing and applies together with other AGEPAN® documents. Installation instructions and building regulations must be observed. The suitability of the material for the intended use must be verified.



www.sonaearauco.com

Your AGEPAN® partner