

 **AGEPAN**[®]

**ALSO
AVAILABLE:**
AGEPAN[®] THD
install – without
pre-milled
slots



AGEPAN[®] THD install pro

The insulation board with pre-milled
installation channels.

A brand of
SONAE 
ARAUCO

EASY PROCESSING, TIME SAVING

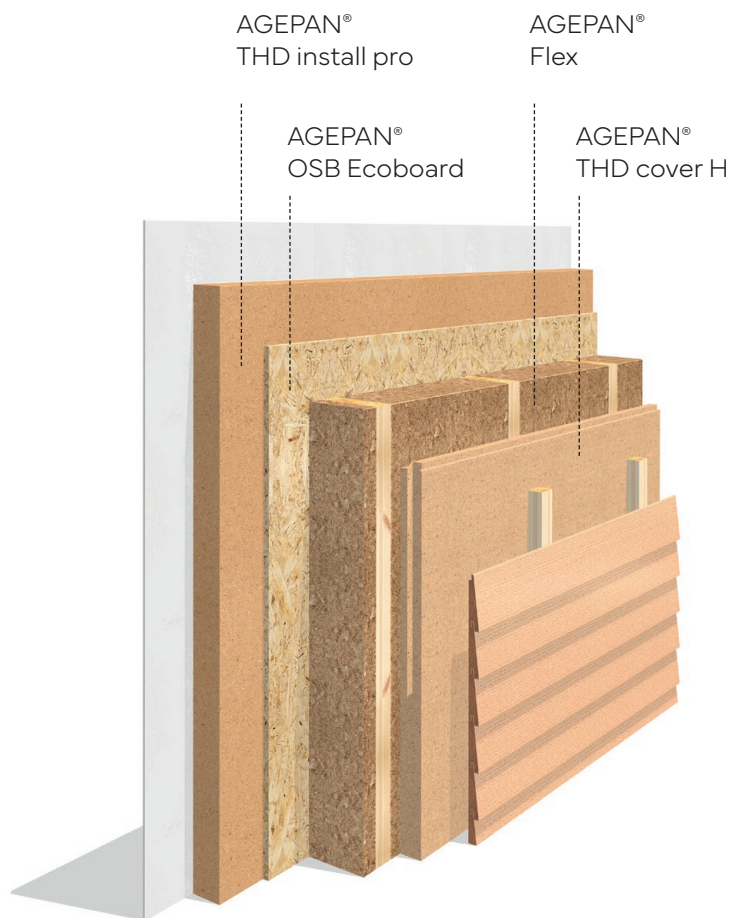
AGEPAN® THD install pro with pre-milled channels is a versatile wood fibre insulation board compliant with EN 13171, ideal for interior wall and roof insulation. Vapor-permeable, thermally insulating and absorbent, it ensures balanced temperatures and a pleasant, comfortable indoor climate – the perfect building material for comfortable living.

Thanks to its pressure-resistant surface, it is the optimal choice – as an installation layer as well as for durable, reliable interior insulation. The solid surface layer allows for the direct fastening of gypsum plasterboard and even plastering with approved systems (e.g., Rotkalk from Knauf Gips KG) or clay plasters.

The natural wood fibres actively contribute to a pleasant indoor climate through their hygroscopic properties: stable temperatures, fewer fluctuations – and noticeably greater living comfort. With its abrasion-resistant surface and exceptionally easy processing with clean cut edges, AGEPAN® THD install pro also excels in installation.

Save time with pre-milled channels

The pre-milled channels enable quick and clean production of installation channels – for greater efficiency, less dirt and significant time savings on the construction site.



+ EASY INSTALLATION

Lightweight console loads, such as pictures or shelves (up to 25 kg per screw), can be attached directly without dowels or additional fasteners. Shorter screws are sufficient, saving installation time and protecting the vapor barrier.



+ TIME-SAVING INSTALLATIONS

Pre-milled channels enable quick and easy installation of cables and conduits. Less dust reduces cleaning effort and results in noticeable time savings on the construction site.

+ EVERYTHING FROM A SINGLE SOURCE

Compatible, perfectly coordinated system products for maximum security and smooth processes.

+ ABRASION- RESISTANT SURFACE

Thanks to the stable, pressure- and abrasion-resistant surface, less fiber abrasion occurs. This speeds up processing, reduces time and costs, and avoids rework.



+ DIRECTLY PLASTERABLE

With approved systems such as Knauf, Claytec, etc.

+ QUALITY PRODUCT

High standards, sustainably produced in Germany – and therefore a low CO₂ footprint.

+ FUTURE-ORIENTED

Environmentally friendly product: Wood as a natural CO₂ storage medium, which comes 100 % from responsible, controlled or certified forestry.



Application areas Field of application according to DIN 4108-10-2021-11

Wall



Insulation of timber frame, timber board construction, and similar cavities	WH
Interior wall insulation	WI
Insulation of room partitions	WTR

Delivery information

Thickness (mm)	Edge	Format (mm)	Cover dimension (mm)	Cover dimension board (m ²)	Pieces/package	Packages/pallet	Weight/pallet (kg)
60	STD	2650 x 600	2650 x 600	1.59	12	1	280

Technical Data

Property	Unit	Value
Standard		EN 13171
Raw density ρ	kg/m ³	~ 230
Nominal thermal conductivity λ_D	W/mK	0.047
Rated thermal conductivity λ_B	W/mK	0.049
Water vapour diffusion resistance factor μ	-	3
Compressive stress/strength	kPa	≥ 200
Tensile strength perpendicular to the plane of the board	kPa	≥ 10
Short-term water absorption	kg/m ²	≤ 1
Specific thermal capacity	J/kgK	2100
Maximum application temperature	°C	110
Formaldehyde emission class		E1*, NAF** (< 0.03 ppm)
Fire behavior Euroclass according to DIN EN 13501-1		E
Board marking		WF-EN 13171-T3-CS(10/Y)200-TR10-WS1,0-MU3
Disposal		Waste wood category A2; waste code numbers (AVV): 030105, 170202

* Meets the requirements according to the German Chemicals Prohibition Ordinance (E05)

** NAF = No-Added Formaldehyde

Building physics parameters

Property	Unit	Board thickness (mm)
		60
Nominal value thermal resistance R_D	m ² K/W	1.20
Thermal resistance R	m ² K/W	1.15
Water vapour diffusion equivalent air layer thickness s_d	m	0.18

If fire protection wall constructions are erected in accordance with the general building inspection test certificate [abP], fasteners and spacing must comply with the abP. The manufacturer's specifications for cladding boards and fasteners as well as the relevant building codes, standards and technical rules must be observed.

General Information

AGEPAN® THD install pro is a pre-slotted interior wall insulation system for easy installation of conduit for electrical services. AGEPAN® THD install pro is typically only required in specific wall areas and is installed together with AGEPAN® THD install.

- + Use only undamaged boards
- + Handle individual boards vertically
- + Protect the material from moisture

Use as interior insulation and installation layer

Preparation of the substrate for installing the AGEPAN® THD install pro:

- + Suitable substrates are AGEPAN® OSB 3 Ecoboard and AGEPAN® OSB 4 Ecoboard, minimum thickness 15 mm
- + Lay and fasten OSB boards according to structural requirements
- + Seal all board joints, wall connections, and penetrations airtight
- + Checking the airtightness of the layer, for example, by using a blower door test, is recommended before installing the AGEPAN® THD install pro

Installation of AGEPAN® THD install pro:

- + Pay attention to the inside and outside of the AGEPAN® THD install pro
- + **IMPORTANT: The pre-slotted side faces the room**
- + Lay boards vertically (Fig. 1)
- + Lay boards precisely, with tight joints, observing staggered joints
- + Fasten the AGEPAN® THD install pro according to table 1

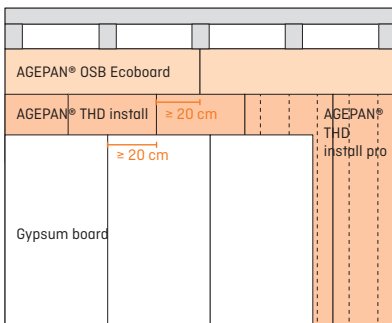


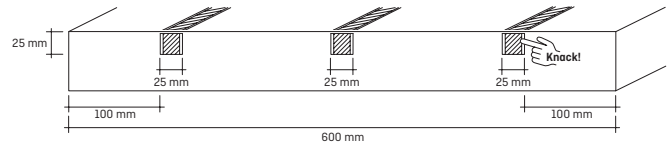
Fig. 1: Vertical installation of AGEPAN® THD Install pro and AGEPAN® THD install on AGEPAN® OSB Ecoboard with GKB

Fastening vertically installed AGEPAN® THD install pro to AGEPAN® OSB Ecoboard

Fasteners	Edge distance (plate edge)	Horizontally spacing	Vertically spacing
Countersunk wood screw Ø 5 mm	≥ 40 mm	≤ 625 mm	≤ 150 mm
Bracket Haubold (angle 30°) KG 700 CNK/BS 29000 for usage in service class 2, minimum staple length 75 mm	≥ 15 mm	≤ 625 mm	≤ 150 mm

Table 1

Incorporating the installation channels:



- + Loosen the webs from the base by gently pushing them sideways back and forth and lift them upwards, reworking them with a chisel if necessary
- + Place the conduit in the groove; it should fit snugly
- + Applying the plasterboard to the AGEPAN® THD install pro covers the conduits

Mounting cladding panels on AGEPAN® THD install pro

- + Gypsum board (GKB) max. 12.5 mm thick, other boards available on request
- + Lay GKB boards upright, maintaining a minimum 20 cm offset between the vertical joints of AGEPAN® THD install pro
- + Gypsum board can be fastened directly into the AGEPAN® THD install pro using phosphated coarse-thread screws from Dresselhaus, Spax, Knauf, Heco, and Würth, or Haubold staples (see table 2 for details)

12.5 mm gypsum board fastening to AGEPAN® THD install pro

Fasteners	Edge distance (plate edge)	Horizontally spacing	Vertically spacing
Self-tapping screw (coarse thread) Ø 3,9 x 35 mm	≥ 25 mm	≤ 400 mm	≤ 150 mm
Ø 5,5 x 38 mm			
Bracket Haubold KG 745 CNK (angle 30°)	≥ 25 mm	≤ 400 mm	≤ 80 mm

Table 2

- + Lightweight console loads are fastened directly into the AGEPAN® THD install pro using standard fully threaded screws. A minimum distance of 10 cm to installation channels is required
- + Console load per screw is up to 25 kg
- + Larger loads (e.g., wall cabinets) are attached to the stud frame or the inner sheathing of the AGEPAN® OSB Ecoboard
- + The installation instructions of the fastener manufacturers must be observed

Areas of application

- + Use as an installation layer and interior insulation
- + Application on solid substrates
- + Cladding from gypsum boards can be directly attached
- + Plasterable with lime and clay plasters



SUSTAINABILITY IS A CORE PRIORITY FOR US.

Protecting the environment is part of our corporate culture. At Sonae Arauco, we are committed to the sustainable use of raw materials and actively uphold these principles throughout the entire production process. AGEPAN® products can contribute to meeting the challenges of climate change.



AGEPAN® shapes the future of building with sustainable wood fiber solutions that connect people and nature. We aim for every construction project to preserve the climate, and enhance quality of life – today and for future generations.

			E05	FF		MADE IN GERMANY ☆☆☆
Heat and cold protection	CO ₂ storage	Healthy living	Meets the requirements according to the German Chemicals Prohibition Ordinance	Formaldehyde-free glued	Weather resistant	Produced in Germany



Use products that are certified accordingly: PEFC certified products can be delivered on demand and within availabilities. Please specify when ordering.



Product Flyer, February 2026

Product and company names in this product flyer are trade names or registered trademarks. Reproduction is permitted only with the express approval of Sonae Arauco. Sonae Arauco assumes no liability for errors or inaccuracies. This product flyer reflects the technical status at the time of printing and applies together with other AGEPAN® documents. Installation instructions and building regulations must be observed. The suitability of the material for the intended use must be verified.



www.sonaearauco.com

Your AGEPAN® partner