

 **AGEPAN**[®]



**COMPLETE
SOLUTION**

only with AGEPAN[®]



AGEPAN[®] THD etics X

The particularly solid plaster
carrier board in the ETICS.

A brand of
SONAE 
ARAUCO

THE PARTICULARLY SOLID PLASTER CARRIER BOARD IN THE ETICS

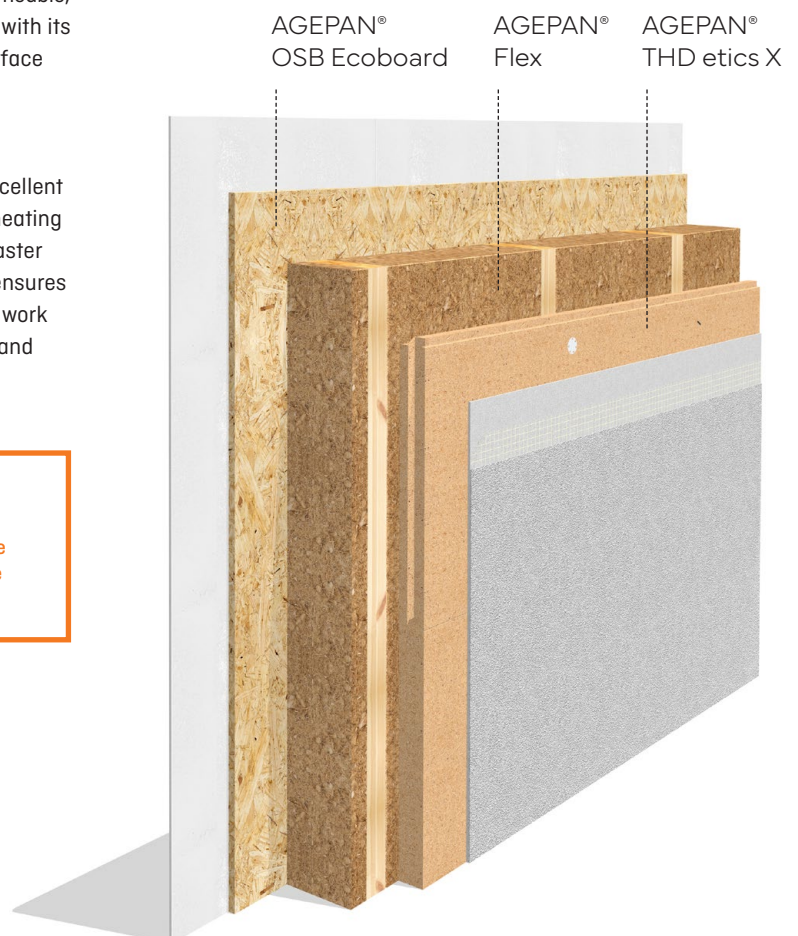
AGEPAN® THD etics X is a high-quality wood fibre insulation board for composite thermal insulation systems (ETICS), with a tongue and groove profile around the edge, manufactured in accordance with EN 13171 for use in ETICS in accordance with general building approval Z-33.47-1724.

It is completely hydrophobic, thermally insulating, and vapour-permeable, and impresses in composite thermal insulation systems (ETICS) with its asymmetrical raw density profile, which ensures exceptional surface strength and resistance.

Thanks to its robust material properties, AGEPAN® THD etics X is extremely impact-resistant and resistant to damage. It offers excellent heat protection and high heat storage capacity, which reduces heating and cooling energy requirements and effectively protects the plaster façade from algae growth. The abrasion-resistant surface also ensures a long service life. In addition, the board is exceptionally easy to work with and impresses with its clean cut edges – ideal for efficient and precise installation.

Strong in ETICS

AGEPAN® THD etics X is extremely impact-resistant and durable – the asymmetrical raw density profile with a solid top layer reduces the risk of impact damage, ensures a long-lasting ETICS, and at the same time allows for easy attachment of mailboxes or outdoor lamps.



+ EXTREMELY IMPACT-RESISTANT

The asymmetrical raw density profile ensures extremely high stability and minimizes damage during use (resistant to damage to the finished façade, e.g., from woodpeckers or bicycles).



+ HEAT PROTECTION

Pleasant indoor climate, reduced need for air conditioning units, and thus long-term energy savings.



+ APPROVED BY BUILDING AUTHORITIES

Safety through ETICS approval, can be plastered with system partners such as Knauf and akurit.



+ FAST AND EASY

Building accessories such as mailboxes or lamps can be easily attached to the solid surface.

+ HIGH-QUALITY PRODUCT

High standards, sustainably produced in Germany – and therefore a low carbon footprint.

+ FUTURE-ORIENTED

Environmentally friendly product: wood as a natural CO₂ reservoir, sourced 100 % from responsible, controlled, and certified forestry.



+ ABRASION-RESISTANT SURFACE

Less dust and cleaning effort, less fiber abrasion in the plaster → faster, time- and cost-saving, no reworking.



+ SAFE TO USE

High heat storage capacity, low risk of algae growth on the finished façade, fewer complaints.



Application areas Field of application according to DIN 4108-10-2021-11

Roof / Ceiling



Interior ceiling insulation (underside) or roof insulation installed beneath the rafters or structural framework, including solutions such as suspended ceilings

DI-zg



Wall



External wall insulation system with render finish

WAP-zh

Insulation of timber frame construction, timber board construction and comparable compartments

WH

Delivery information

Thickness (mm)	Edge	Format (mm)	Cover dimension (mm)	Cover dimension board (m ²)	Pieces/package	Packages/pallet	Weight/pallet (kg)
40	T+G	1890 x 600	1875 x 585	1.1	26	2	570
60	T+G	1890 x 600	1875 x 585	1.1	17	2	570
80*	T+G	1890 x 600	1875 x 585	1.1	13	2	570

* Upon request

Technical Data

Property	Unit	Value
Standard		DIN EN 13171
Raw density ρ	kg/m ³	~ 230
Nominal thermal conductivity λ_D	W/mK	0.047
Rated thermal conductivity λ_B	W/mK	0.049
Water vapour diffusion resistance factor μ	-	3
Compressive stress/strength	kPa	≥ 200
Tensile strength perpendicular to the plane of the board	kPa	≥ 10
Short-term water absorption	kg/m ²	≤ 1
Specific thermal capacity	J/kgK	2100
Maximum application temperature	°C	110
Formaldehyde emission class		E1*; NAF (< 0.03 ppm)
Fire behavior Euroclass according to DIN EN 13501-1		E
Outdoor exposure		up to 4 weeks
Board marking		WF-EN 13171-T3-CS(10/Y)200-TR10-WS1,0-MU3
Disposal		Waste wood category A2; waste code numbers (AVV): 030105, 170201

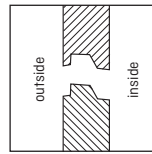
* Meets the requirements according to the German Chemicals Prohibition Ordinance (E05)
NAF = No-added formaldehyde

Building physics parameters

Property	Unit	Board thickness (mm)		
		40	60	80
Nominal value thermal resistance R_D	m ² K/W	0.80	1.20	1.60
Thermal resistance R	m ² K/W	0.75	1.15	1.50
Water vapour diffusion equivalent air layer thickness s_d	m	0.12	0.18	0.24

General information

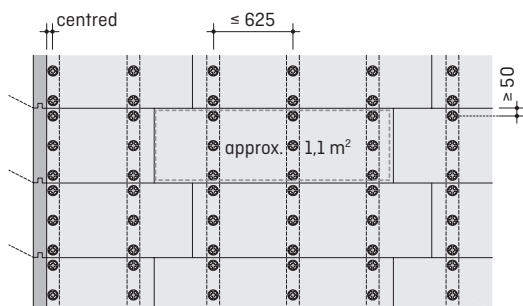
- + Store and process boards in a dry place
- + Only use boards that are in perfect condition
- + Note the inside and outside (stamped side to be plastered)
- + Lay the boards precisely in a pattern with the tongue facing upwards
- + Offset joints by at least 30 cm
- + Cutting the bottom boards: cut back the groove
- + Attach the boards to the base connection strip and align them so that they are flush
- + Board joints with N+F are permitted in the compartment; cross joints are not permitted
- + Seal penetrations with joint sealing tape
- + Exposure to the elements for up to 4 weeks; in poor evaporation conditions, up to 14 days
- + Immediately before applying plaster: Board moisture $\leq 13\%$



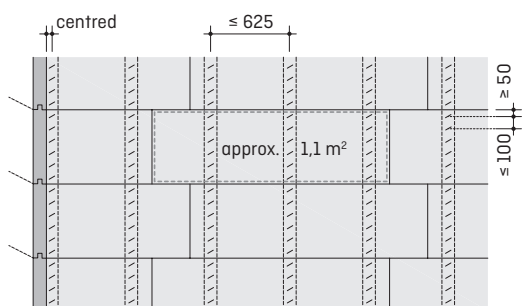
Fastening

- + Fasten boards to at least two wooden studs (≤ 625 mm)
- + Sink staples to be flush with the surface
- + Fastening in accordance with approval abZ/aBG Z-33.47-1724
 - broad back staples (stainless steel)
 - screw dowl EJOT® ejotherrm STR H
 - screw dowl Fischer TermoFix 6H-NT

The spacing of fasteners must be observed:



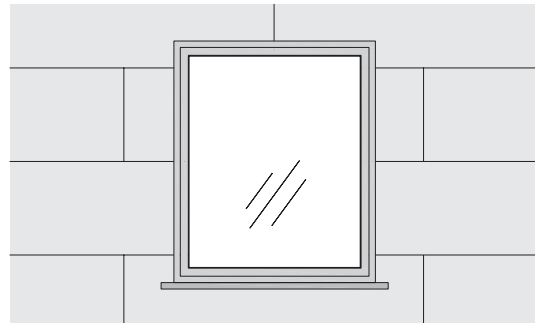
Dowel fastening in case of non-supported joints



Stapel fastening in case of non-supported joints

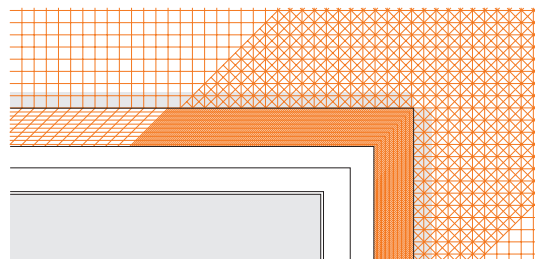
Connections and openings

- + Ensure that window connections, window sill connections and all openings are rainproof
- + Avoid cross joints at window and door openings



Connection mesh, base coat and top coat

- + Set and align base profiles, plaster strips, and mesh corner angles
- + Apply base coat
- + Embed all connection mesh in reinforcing plaster
- + Embed diagonal reinforcement



- + Embed reinforcement mesh, observe layer thicknesses in accordance with approval
- + Apply finishing coat
- + Apply additional coat if necessary (see approval)
- + Joints < 5 mm can be grouted with sealant in accordance with the plaster manufacturer's specifications
- + Plastering door and window reveal is possible with AGEPAN® UDP



Please note the general building approval abZ/aBG Z 33.47-1724 for AGEPAN® THD etics X with the two plaster systems Knauf and akurit. Furthermore, the current processing instructions from AGEPAN® and the instructions from the plaster manufacturers must be observed.



SUSTAINABILITY IS A CORE PRIORITY FOR US.

Protecting the environment is part of our corporate culture. At Sonae Arauco, we are committed to the sustainable use of raw materials and actively uphold these principles throughout the entire production process. AGEPAN® products can contribute to meeting the challenges of climate change.



AGEPAN® shapes the future of building with sustainable wood fiber solutions that connect people and nature. We aim for every construction project to preserve the climate, and enhance quality of life – today and for future generations.

			E05	FF		MADE IN GERMANY ☆☆☆
Heat and cold protection	CO ₂ storage	Healthy living	Meets the requirements according to the German Chemicals Prohibition Ordinance	Formaldehyde-free glued	Weather resistant	Produced in Germany



Use products that are certified accordingly. PEFC certified products can be delivered on demand and within availabilities. Please specify when ordering.

Product Flyer, February 2026

Product and company names in this product flyer are trade names or registered trademarks. Reproduction is permitted only with the express approval of Sonae Arauco. Sonae Arauco assumes no liability for errors or inaccuracies. This product flyer reflects the technical status at the time of printing and applies together with other AGEPAN® documents. Installation instructions and building regulations must be observed. The suitability of the material for the intended use must be verified.



www.sonaearauco.com

Your AGEPAN® partner