

 **AGEPAN**[®]



**COMPLETE
SOLUTION**
only with AGEPAN[®]



AGEPAN[®] **DWD protect**

The Original.

A brand of
SONAE 
ARAUCO

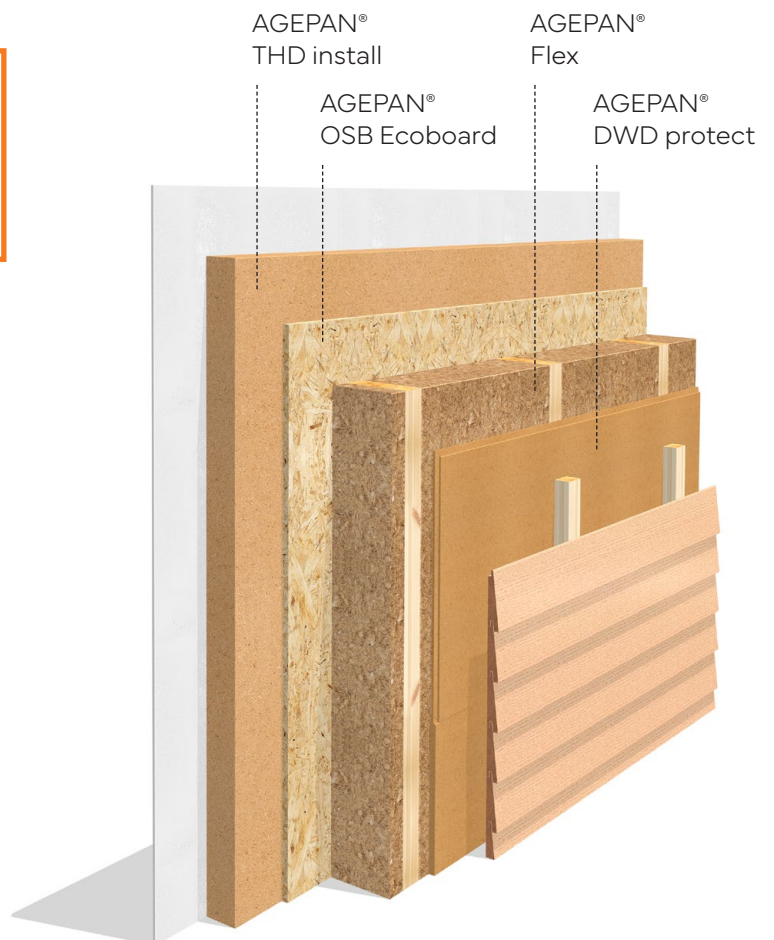
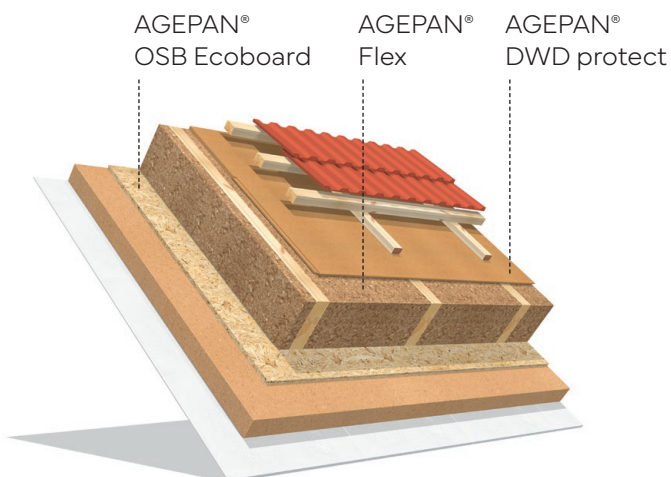
THE ORIGINAL

AGEPAN® DWD protect is a vapour-permable wood fibreboard type MDF.RWH in accordance with EN 622-5 – for rear-ventilated roof and wall constructions. It serves as a second water-repellent layer and can be used as a static stiffening element for roof and wall constructions in accordance with German building approval Z-9.1-382.

In accordance with EN 14964: Type IL and UDP-A according to ZVDH regulations, it meets the highest requirements for safety and durability. Thanks to its emergency roof function, it also offers maximum flexibility on the construction site – with temporary weather protection for up to 8 weeks.

More stability – load-bearing paneling in the system

AGEPAN® DWD protect is an impressive load-bearing sheathing for board-like structures to stabilize bar-shaped ribs at risk of buckling or tilting in accordance with aBG Z-9.1-382. This turns every structure into a safe, load-bearing, and durable construction – meeting the highest demands of modern timber construction.



+ EXCEPTIONALLY PRESSURE-RESISTANT

High pressure resistance and excellent cutting properties ensure efficient material utilization. The robust design guarantees long-lasting stability and reliable protection throughout the entire life cycle.



+ ABRASION-RESISTANT SURFACE

Less dust and dirt, better adhesion of adhesive tapes – saves time and primer.

+ UNDERLAY UDP-A

Second water-repellent layer, windproof and rainproof.

+ EMERGENCY ROOF FUNCTION

Flexibility in the construction process thanks to temporary roof function for up to 8 weeks.

+ FUTURE-ORIENTED

Environmentally friendly product: wood as a natural CO₂ store, sourced 100 % from responsible, controlled, and certified forestry.



+ QUICK AND EASY PROCESSING

The stable tongue-and-groove profile enables quick and easy installation, contributing to a significantly more efficient workflow on the construction site.

+ HIGH-QUALITY PRODUCT

High standards, sustainably produced in Germany – and therefore a low carbon footprint.



Application areas

Roof/Wall



AGEPAN® DWD protect with tongue and groove to be used as sarking board type IL in accordance with EN 14964

Rainproof additional measures of class 3 for roof pitches > 14° acc. to the ZVDH „Merkblatt für Unterdächer, Unterdeckungen und Unterspannungen“; UDP-A

Joint load-bearing cladding of in-plane loaded wall boards for the stabilisation of bar-shaped ribs at risk of buckling or tilting according to German general construction technique permit (aBG) Z-9.1.-382

Rigid sarking board as a second water-repellent layer and windproof layer for rear-ventilated exterior wall cladding and roof covering in accordance with DIN 68 800-2

Delivery information

Thickness (mm)	Edge	Format (mm)	Cover dimension (mm)	Cover dimension board (m²)	Pieces/package	Packages/pallet	Weight/pallet (kg)
16	STD	2800 x 1196	2800 x 1196	3,3	48	1	1470
16	STD	3000 x 1247	3000 x 1247	3,7	48	1	1640
16	T+G	2515 x 1015	2500 x 1000	2,5	40	1	930
16	T+G	2515 x 640	2500 x 625	1,6	40	1	590
16	2-sided T+G	3000 x 1265	3000 x 1250	3,8	40	1	1385

Technical Data

Property	Unit	Unit
Unit		EN 622-5 / EN 13986
Technical standard		MDF.RWH
Raw density ρ	kg/m ³	~ 565
Nominal thickness	mm	16
Thermal conductivity λ	W/mK	0,09
Water vapour diffusion resistance factor μ		11
Water vapour diffusion equivalent air layer thickness s_d	m	0,18
Bending strength	N/mm ²	14
Modulus of elasticity	N/mm ²	1800
Internal bond	N/mm ²	0,35
Swelling in thickness	%	≤ 8,5
Internal bond after boil test	N/mm ²	0,06
Specific thermal capacity	J/kgK	1700
Maximum application temperature	°C	110
Formaldehyde emission class		E1*, NAF (< 0,03 ppm)
Fire behavior Euroclass according to DIN EN 13501-1		D-s1, d0
Moisture content upon delivery	%	9 ± 4
Moisture content upon delivery	m	1,00
Permissible axial dimension acc. to ÖNORM B 4119:2018-03	m	≤ 1,00
Outdoor exposure		up to 8 weeks
Disposal		Waste wood category A2; waste code numbers (AVV): 030105, 170210

* Meets the requirements according to the German Chemicals Prohibition Ordinance (E05)
NAF = No-Added Formaldehyde

General information

- + Protect boards from moisture, store and process in a dry place
- + Only undamaged boards should be used
- + Move individual boards upright
- + When removing from the package, grip the full thickness of the board
- + Acclimatize the material to the expected moisture level, removed packaging film during storage at the place of installation
- + Changes in length and width due to the effects of moisture must be taken into account in the design

Outdoor exposure

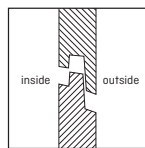
- + Once installed the board can be exposed to natural weather conditions up to 8 weeks
- + If moisture is absorbed, ensure that the boards are dried back to their normal moisture content
- + Excessive moisture absorption reduces the strength of the boards and cannot be completely restored after drying
- + When used as load-bearing cladding in accordance with aBG Z-9.1.-382, the boards must be protected from precipitation. The moisture content of the boards must not exceed 15 % on a permanent basis

Walk on stability

- + According to the regulations of the German ZVDH (Central association of German Roofers) the product is not safe to walk on. Load transfer in the area between the rafters is not permitted. AGEPAN® DWD protect is safe to tread on in the rafter area
- + The requirements of ÖNORM B 4119 regarding the walkability of sub-roofs are met by 16 mm AGEPAN® DWD protect for a rafter center distance ≤ 100 cm, provided that the boards are dry, undamaged, professionally installed, and secured. Floating joints in the rafter field are not permitted. No prior exposure to moisture from outside (e.g. due to weather conditions) or inside (e.g. due to moisture from construction work or condensation) is permitted.
- + Accident prevention regulations must be strictly observed

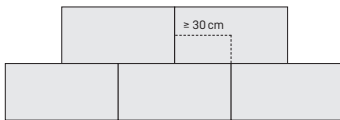
Installation instructions

- + Distinguish between inside and outside (see T+G logo-print outside)
- + Boards can be laid directly on the supporting structure
- + The tongue points upward or toward the ridge



Wall

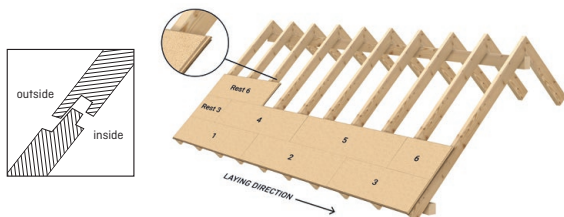
- + The following grid dimensions must be observed:
 - 62.5 cm
 - 83.5 cm
- + Lay boards with tongue and groove precisely and joint-tight in a bond pattern
- + The joint offset is at least 30 cm



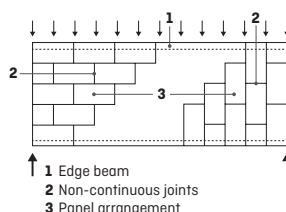
- + In structural applications, the edges of the slabs must be fully supported and connected to the supporting structure in a shear-resistant manner
- + The permissible center distance is 0.75 times the board width. The specifications according to DIN EN 1995-1-1 must be observed

Roof

- + Laying perpendicular to the rafters, starting at the bottom edge (corner area)
- + Start laying the second row with the remaining piece from the first row and fasten it to at least 2 rafters
- + Joint offset at least 1 bay width

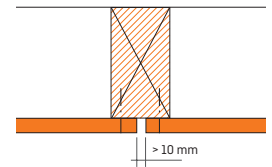


- + Roof boards are designed in accordance with the regulations set out in DIN EN 1995-1-1
- + The boards can be arranged horizontally to the rafters or vertically
- + Free board edges are permitted in accordance with the boundary conditions set out in DIN EN 1995-1-1



Expansion joints

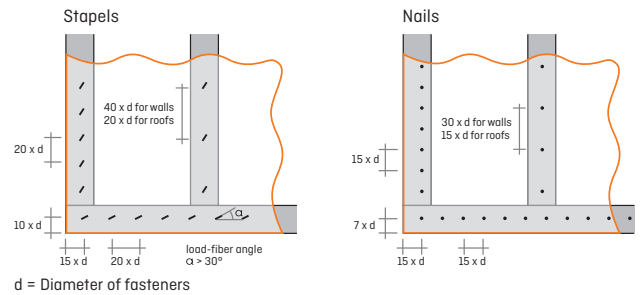
- + Expansion joints must be taken into account for continuous roof surfaces measuring approx. 7 m or more
- + To this end, we recommend making an expansion cut in the longitudinal direction of the rafters or studs



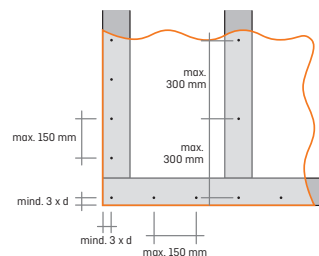
Fastening

- + Fastening is carried out using staples, nails, or screws with a building authority certificate of usability (standard or approval)
- + The length of the fasteners is 2.5 x the board thickness, but at least 50 mm
- + Staples with a wire diameter $d \geq 1.52$ mm
- + When using nails, flat-head nails or grooved nails must be used

Recommended minimum spacing of fasteners for structural application



Recommended spacing in non-structural application



The fastening of the counter batten on roofs and walls are depending on the loads and should be carried out according to structural verification. Please find design aids at www.sonaearauco.com.

Additional rainproof measure, increased rainproof underlay

- + Additional rainproof measure in accordance with ZVDH "Merkblatt für Unterdächer, Unterdeckungen und Unterspannungen" class 3 for roof pitches $> 14^\circ$, UDP-A
- + Increased rainproof underlay in accordance with ÖNORM B 4119 for roof pitches $\geq 5^\circ$ (taping of the T+G connection in the tested system with TESCON® VANA + Primer, pro clima®)

Sealing joints and penetrations

- + Recut seams, connections and penetrations must be windproof and rainproof sealed with suitable adhesive tape
- + The following adhesive tapes are recommended for this purpose:
 - pro clima®, TESCON VANA
 - Ampack, Ampacol XT
 - SIGA, SIGA Wigluv®



SUSTAINABILITY IS A CORE PRIORITY FOR US.

Protecting the environment is part of our corporate culture. At Sonae Arauco, we are committed to the sustainable use of raw materials and actively uphold these principles throughout the entire production process. AGEPAN® products can contribute to meeting the challenges of climate change.



AGEPAN® shapes the future of building with sustainable wood fiber solutions that connect people and nature. We aim for every construction project to preserve the climate, and enhance quality of life – today and for future generations.

		E05	FF		MADE IN GERMANY ☆☆☆
CO ₂ storage	Healthy living	Meets the requirements according to the German Chemicals Prohibition Ordinance	Formaldehyd-free glued	Weather resistant	Produced in Germany



Use products that are certified accordingly: PEFC certified products can be delivered on demand and within availabilities. Please specify when ordering.



Product Flyer, February 2026

Product and company names in this product flyer are trade names or registered trademarks. Reproduction is permitted only with the express approval of Sonae Arauco. Sonae Arauco assumes no liability for errors or inaccuracies. This product flyer reflects the technical status at the time of printing and applies together with other AGEPAN® documents. Installation instructions and building regulations must be observed. The suitability of the material for the intended use must be verified.



www.sonaearauco.com

Your AGEPAN® partner